

# College Management Information System

Hussain Ansari<sup>1</sup>, Tausif Ahmed Khan<sup>2</sup>, Milan Maghudiya<sup>3</sup>, Sharvari Patil<sup>4</sup>

<sup>1,2,3</sup>Student, Department of Computer Engineering, Vasai, Universal College of Engineering, India

<sup>4</sup>Professor, Department of Computer Engineering, Vasai, Universal College of Engineering, India

**Abstract:** In the existing management system there are plenty of activities that are handled manually. All these activities are paper based which are time-consuming. Different activities are handled by a different department, so accessing information from management is become quite difficult. In the proposed system a better solution is defined for all these activities which are computer-based require less effort and time-saving. The proposed system is a design for the college management information system, utilizing a computer-aided system, which can play an important role in the management of various internal activities such as student's details staff details. Railway Concession Module, Course plan Generation and Faculty Leave Management Modules. This system thereby reduces data redundancy and improves data consistency.

**Keywords:** College Management Information System, Computer-Aided System, Data Management, Redundancy.

## 1. Introduction

Objective of College information management system is to allow the administrator of any organization to edit and determine the private detail of a student and permits students to keep up to date his profile It'll also facilitate keeping all the records of student, such as their id, name, mailing address, phone number, date of birth. So all the information about a student will be available in a few seconds. Overall, it'll make Student information a neater job for the administrator and therefore the student of any organization. The main purpose of this project is, for instance, the wants of the project college information management system and is meant to assist any organization to take care of and manage personal data. It is a comprehensive project developed from the ground up to fill the needs of colleges and they guide their students. This education edge integrated information management system connects daily operations within the college environment starting from registration to finance, faculty, students. This reduces data error and ensures that information is always up-to-date throughout the college. It provides the single source of a data repository for streamlining your management processes and for all reporting purposes. It has an easy interface and is intuitive. This ensures that the users spend less time learning the system and hence, increase their productivity. Efficient security features provide data privacy and hence, increase their productivity. The proposed system enables the user to carry out the required task by taking fewer efforts, its maintenance the large datasheets. Being a computer-aided system it ensures the user being free

regarding its security as it does not have a threat of getting lost or damaged. The proposed system reduces the efforts in a process such as applying for leave easier for faculty as they just need to apply for leave and admin will provide the status regarding their application whether the leave is granted or not. The students can view their course details which are generated by respective faculties. According to which the students can plan their studies. Here the students can view the subjects their topics and planned dates to cover that topic. The students' can also apply for railway concession form over this system by following simple steps. This reduces the efforts and time by the students to avail concession form and overall this system saves the data more efficiently than the existing manual system.

## 2. Literature Review

[1] Dastagir Pojee, Farooq Shaikh, Vishal kuvar, Fahim Rarh, Mohd. Abbas Meghani, they have design a Management Information System for college in which they have covered several modules the modules are Online Paper correction in which answer booklet uploaded by the staff can be corrected online by the teachers without physically being within the boundary of university. Digital notice boards an online notice board that will display all the notes that is relevant to the user. And college management Framework which replaces the manual system in college universities.

[2] Samkit Jain, Radhika garg, vaibhav Krishna, Lila shah developed a university management system, in that they have developed different modules to hold the huge data which is generating efficiently and to provide the required information at any point. Their modules consist of attendance which is used to hold the attendance record of any particular department as required, alumni association module in this it organizes and manages all alumni, and can be part of any events. E-notes module deals with the online generation of notes which can very help full for the students. The event management module is the module that manages the work of the events which were carried out manually before and was not that efficient. E-library module in this module the students or any other member can do its work which needs to go to the library. This system has been developed to handle all data types which can be statistical in nature. An authoritative professional is required to coach this data as reliable, verified, authoritative and professionally trained. This authority must be a professional and independent entity that must be acceptable by all of the other users in an

organization. When an information system is being developed then it is very much necessary to get the exact and reliable statistics before this system gets applied to any sort of management. Information systems are always developed to process genuine data into information, not garbage data. In educational management systems, these information systems should address both the management and statistics in a more efficient way and should produce information in an effective format.

[3] Liangqui Meng has proposed a design for the college management information system, the system contains four layers. The web display layer, Business logic layer, Data access layer, Database layer. It holds information related to teachers, department, class, student, course, etc. the functional module is provided and three types of users are designed in this system, student, teacher, and manager. The student is the lowest authority in this system, and this system provides high-quality service to students through a timely understanding of what students need. The teacher performs a bridge between the school and the students, and teachers directly contact with students. the system administrator is the highest authority role in the college management system,

### 3. Proposed System

The proposed system is a computer-based system that is used to replace the manual process of managing and storing data related to various departments in the institution. It provides a more efficient and quick way of handling data. This includes a brief description of the proposed system and explores the different modules involved along with the various models through which this system is understood and represented.

- Leave management module
- Railway concession
- Course plan generation

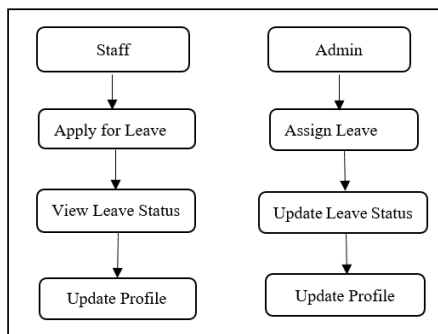


Fig. 1. Architecture of leave management module

The leave management module is the module that includes the details related to the teaching staff. The staff apply for leave and can view the status of the leave request. The staff can also update its profile. The admin receives that application, the admin updates the status of the leaves weather it is approved, pending or rejected on the confirmation. It maintains the track record of the leaves assigned to faculty it counts the leave assign

to faculty and decreases it automatically once leave of faculty confirmed. admin has total control of the module. If new faculties will be appointed, then the admin will add them to the system. The admin can update its profile.

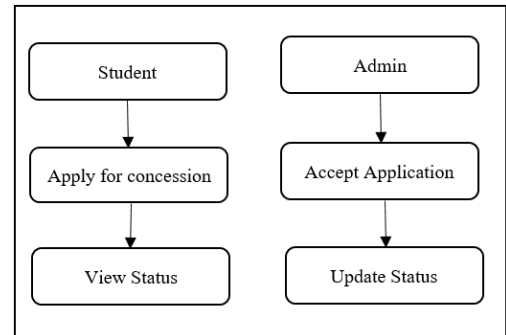


Fig. 2. Architecture of railway concession module

The railway concession module is used by the students. The students who required railway concession need to apply here by providing necessary information. The students can view the status of their application whether it is ready or not. The application accepts by the authorized person and keeps the concession form ready for the corresponding student. And update the status that form is ready and can be collected. This reduces the time and effort of the students to get a concession form.

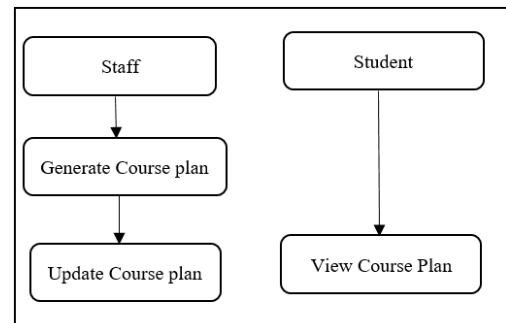


Fig. 3. Architecture of the course plan generation module

The course plan generation module is accessed by both faculties and students. using this module, the faculties plan the time duration for a particular course such as the topics included in course the time required to complete the topic and the date on which the is planned to teach. The faculty can generate the course plan and update it as per requirement. The students cannot make any changes in this module they have only read access and can only view the course plan but the faculties have the full access they can make the necessary changes as required.

### 4. Result and discussion

The result and discussion section present the research findings and the analysis of those findings. It usually focuses on practical application or provides a summary of the paper. The result helps us tom study the system more effectively. It helps

us to understand the proper flow of system, functionalities, etc.

updated whether accepted or denied.



Fig. 4. Login page of the system

The login page allows the user to log in for their account. They have to use the authentic username and password. If any of it doesn't match they won't have access to the system.

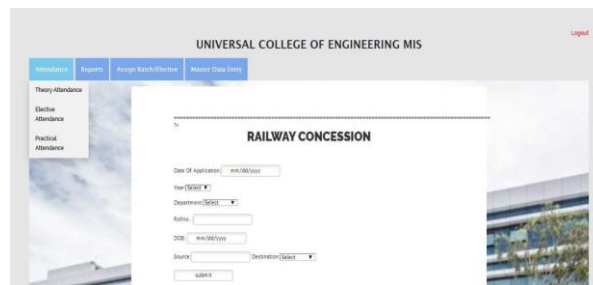


Fig. 7. Railway concession form

The user can have access to the railway concession module. This is designed for students where they can apply for railway concession by applying here providing the necessary details which are directed to admin. And there it is kept ready and can be collected any time.

**COURSE PLAN**

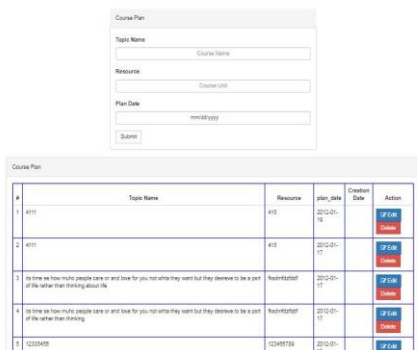


Fig. 5. The course plan generation module

The courser plan generation module is accessed by faculties only it is used to plan the schedule of any particular subject to be conducted by the faculties. It includes topic name, useful resources, the planned date on which the topic is supposed to be conducted, the faculty have total control of the module and can make any necessary changes. The students here going to have only read access, they can just view the course plans.

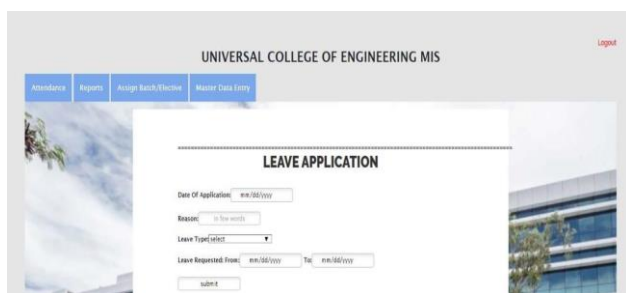


Fig. 6. leave application for staff

This module is developed for staff. The staff can apply for leave by providing the necessary details here such as leave type, duration, start date, end date, etc. the application is directed to the admin and gets verified by authorized person and status

**5. Conclusion**

One of the objectives of the proposed system is to decrease the paperwork and easier record maintenance by having a leave management system for faculties. The leave management system not only maintains the leave details but also maintains the leave application of the staff. The higher authorities may accept or reject the leave application requested by the staff. Thus this system does the excess amount of job done by the college to maintain left. The course plan generation module enables faculty to plan the time duration to conduct a course and students can view the topics to be conducted. The railway concession module helps students to apply for railway concession using this system. CMIS increases quality in work for educational institutes. The software facilitates the administrators to know the status of a student in the institute. The software stores information related to students and faculties. The quality of the work done would be improved and work satisfaction on the part of the faculties after computerization would definitely on high. User satisfaction would be higher when compared to the old manual system

**References**

- [1] L. Meng, "College Student Management System Design Using Computer Aided System," *2015 International Conference on Intelligent Transportation, Big Data and Smart City*, Halong Bay, 2015, pp. 212-215.
- [2] D. Pojee, F. Shaikh, V. Kuvar, F. Rarh and M. A. Meghani, "Multi-platform college management framework," *2017 2nd International Conference on Communication and Electronics Systems (ICCES)*, Coimbatore, 2017, pp. 156-159.
- [3] S. Jain, R. Garg, V. Bhosle and L. Sah, "Smart university-student information management system," *2017 International Conference On Smart Technologies for Smart Nation (SmartTechCon)*, Bangalore, 2017, pp. 1183-1188.
- [4] W3 schools, <https://www.w3school.com/php>
- [5] <https://www.youtube.com/phptutorial>
- [6] <https://www.youtube.com/posgressql>
- [7] Stack overflow, <https://stackoverflow.com/mysqli>
- [8] Geeks for geeks, <https://www.geeksforgeeks.org/php/>