

# Business Companion

Sarvesh Patil<sup>1</sup>, Mahesh Ambrale<sup>2</sup>, Anuj Yadav<sup>3</sup>, Debarati Ghoshal<sup>4</sup>

<sup>1,2,3</sup>Student, Department of Information Technology, Vidyalkar Institute of Technology, Mumbai, India

<sup>4</sup>Professor, Department of Information Technology, Vidyalkar Institute of Technology, Mumbai, India

**Abstract:** Traditionally, if any individual desires to buy, sell, rent a shop he/she would have to personally go the shop and would personally have to evaluate the possible competition in the same area. This approach is time consuming and it provides with a less success rate at the business. Proposed website will try to overcome this problem. Many a times the individual try to buy or rent the shop is unable to gather information related to his or her requirement which may cause loss to that individual. So to overcome this problem we have come across the solution. Project consist of website in which the user1 the seller has to enter his or her personal detail like name, address, contact information. Then the user will be requested to enter the shop details like area, previously rented shop type, type of business desired to open. The user 2 the buyer also has to register on the website on which he or she will be asked to enter the personal details which include the name, address, contact information etc. The user will be then asked to enter location in which he or she desires to buy or rent the shop and then would provide the best possible suggestion.

**Keywords:** Business companion.

## 1. Introduction

Business is an activity through which one makes living or make money by through production or buying and selling products i.e. goods and services. It can also be defined as any activity that allows enterprise earn profit. It does not mean it is a company, corporation, or have any such formal organization, but it can range from a street peddler to general motor manufacturer." A Business company can increase the profit of its clients, workers if implemented properly. But sometimes it can lead to bankruptcy or there will be no profit in the future times. There are various factors that can help a small business to become a huge market leading company that helps people working under it, and the stakeholders as well as the clients. One of those factors is the perfect location, Since the location part can play an important role in the growth of business, our project will try to provide the best location possible for a business. With the highest success rate location which will be calculated by local stores, other competing business company's quantity in that region, the Business which we are providing the location having the highest success rate to will reach the peak of market in no time.

## 2. Literature Survey

Ajinkya Kunjir, Harshal Sawant, Nuzhat F. Shaikh, A huge amount of data is generated in the fields of health-care science and diagnostics, doctors have to directly meet with patients to

determine the wounds, injuries and diseases by which the patient is affected. This paper provides the insights of application of classification and prediction of specific diseases by implementing operations on the medical data that is generated in the field of medical science and health-care. This project uses an efficient multi class Naive Bayes algorithm for prediction of a particular disease by training the algorithm on a set of data before the actual implementation

Mohd Taufik Mishan; Albin Lemuel Kushan; Ahmad Firdaus Ahmad Fadzil; Aimi Liyana Binti Amir; Nurhily, Nowadays the exponential evolution of repositories in business information data has led to an unorganized, enormous and unstructured data collection. Hence, it has escalated the difficult to retrieve useful information from these vast collections of data. Business Intelligence System Model is therefore recommended as a process-focused design for efficient understanding and evaluation of effectiveness of information retrieval. This is achieved by using Decision Tree Clusters association time and Naive Bayes Neural Networks Algorithm. The goal of Business Intelligence Profitability Model is to make the interpretation of the large data volumes easier.

## 3. Problem Statement

There are various things happening around the Location in regards to business like selling a location, purchasing a location or renting a location. With the lesser knowledge about the locality of the place, a buyer or business owner cannot gain profit from that particular location. Opposite to the success the buyer will invite a huge loss in the business due to that location. In some scenarios the particular place is great for only certain type of business but due to the less knowledge about the business running around that location, the business owner cannot gain profit in that location with different type of business. So we need to develop a system that can help business owners to select the perfect location.

## 4. Proposed System

The proposed system which will be a web based solution providing a highest success rate containing location for the particular type of business owners. This will be done by getting the locality of the region to which the owner wants to start the project, the by using the prediction algorithms we can provide the success rate of that business in that precise region. The algorithm will take dataset containing different stores,

businesses running around that region into account and will give the success rate prediction. So there's no need to manually analyze a location for business and there are very less chances that the system will have false prediction for a particular project.

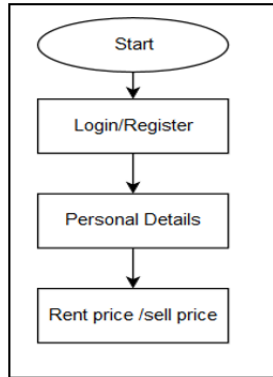


Fig. 1. User Flowchart

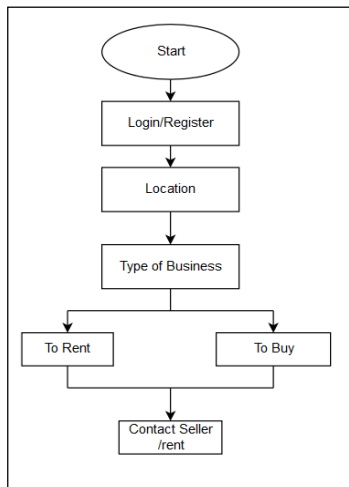


Fig. 2. Flowchart

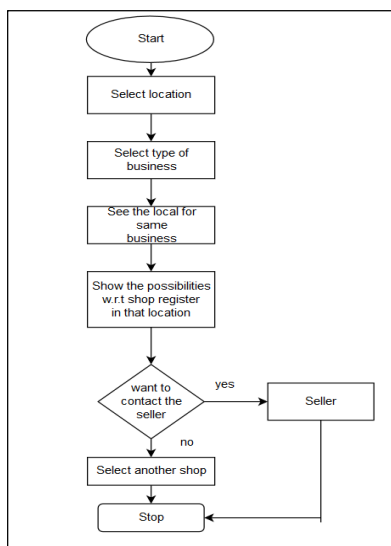


Fig. 3. Website Flow

### 5. Hardware and Software Requirements

*H/W Requirements:*

- 1) Computer or a Smartphone to access the website.
- 2) Server

*S/W Requirement:*

- 1) Browser
- 2) Python 3.6
- 3) HTML, CSS/3, Javascript

### 6. Methodology and Implementation

The Business Companion is a website which takes location and business category into account to generate success probability for the given input. Initially the user is required to register on the website as it he/she will using the website for the first time. The user will be prompted to enter details such as personal details and shop details. The website will first check if there are location available for business in the given location. If no, then it will prompt a message that no location available for business in that particular region and will have a button to continue otherwise. The system calculates probability regarding the business. For Front end we are using html technology. Main page will consist Admin Login, Customer Login and Seller Login. For designing part, we are using css3 technology with the help of bootstrap. After seller's login, if the seller wants to put his/her location on rent he/she will have required to put location detail about the place, location in square ft., price per square ft.

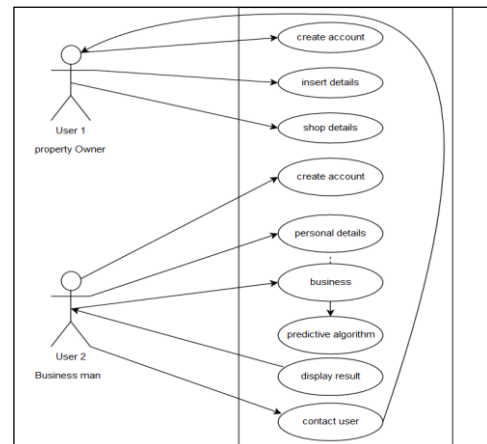


Fig. 4. Methodology

### 7. Results



Fig. 5. Websites page 1

## 8. Conclusion

This paper presented an overview on business companion.

## References

- [1] A. Kunjir, H. Sawant and N. F. Shaikh, "Data mining and visualization for prediction of multiple diseases in healthcare," *2017 International Conference on Big Data Analytics and Computational Intelligence (ICBDAC)*, Chirala, 2017, pp. 329-334.
- [2] M. T. Mishan, A. L. Kushan, A. F. A. Fadzil, A. L. Binti Amir and N. B. Anuar, "An analysis on business intelligence predicting business profitability model using Naive Bayes neural network algorithm," *2017 7th IEEE International Conference on System Engineering and Technology (ICSET)*, Shah Alam, 2017, pp. 59-64.

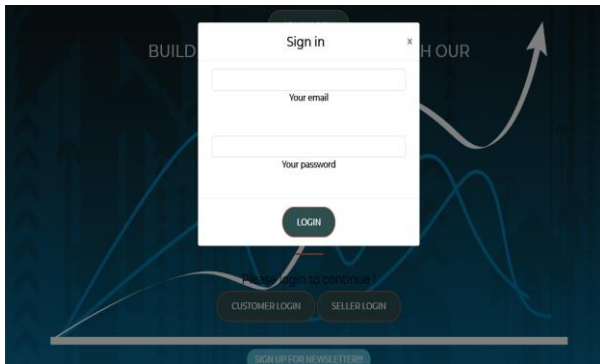


Fig. 6. Website Page 2